

Biggenden Museum

25°30'50"S 152°2'47"E

25°30'50"S 152°2'52"E



A product of
Queensland Globe



10 metres

Print Date: 25/9/2018

Paper Size: A4

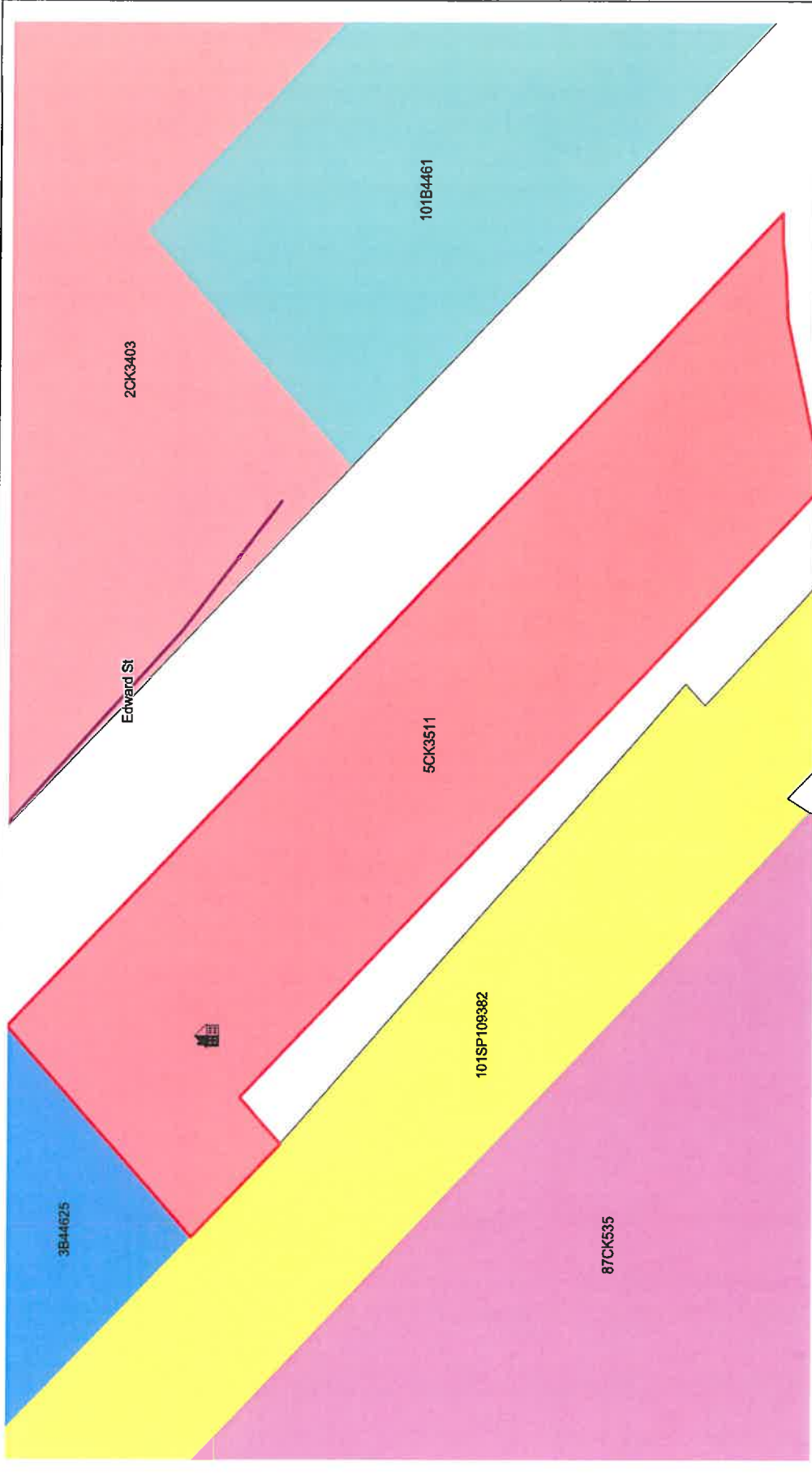
Imagery

Includes material © CNES
reproduced under licence from
Albus DS, all rights reserved, ©
21AT © Earth-i, all rights
reserved, 2018



© State of Queensland 2018
You are responsible for ensuring
that the map is suitable for your
purposes.

The State of Queensland makes
no representation or warranties in
relation to the map contents and
disclaims all liability.

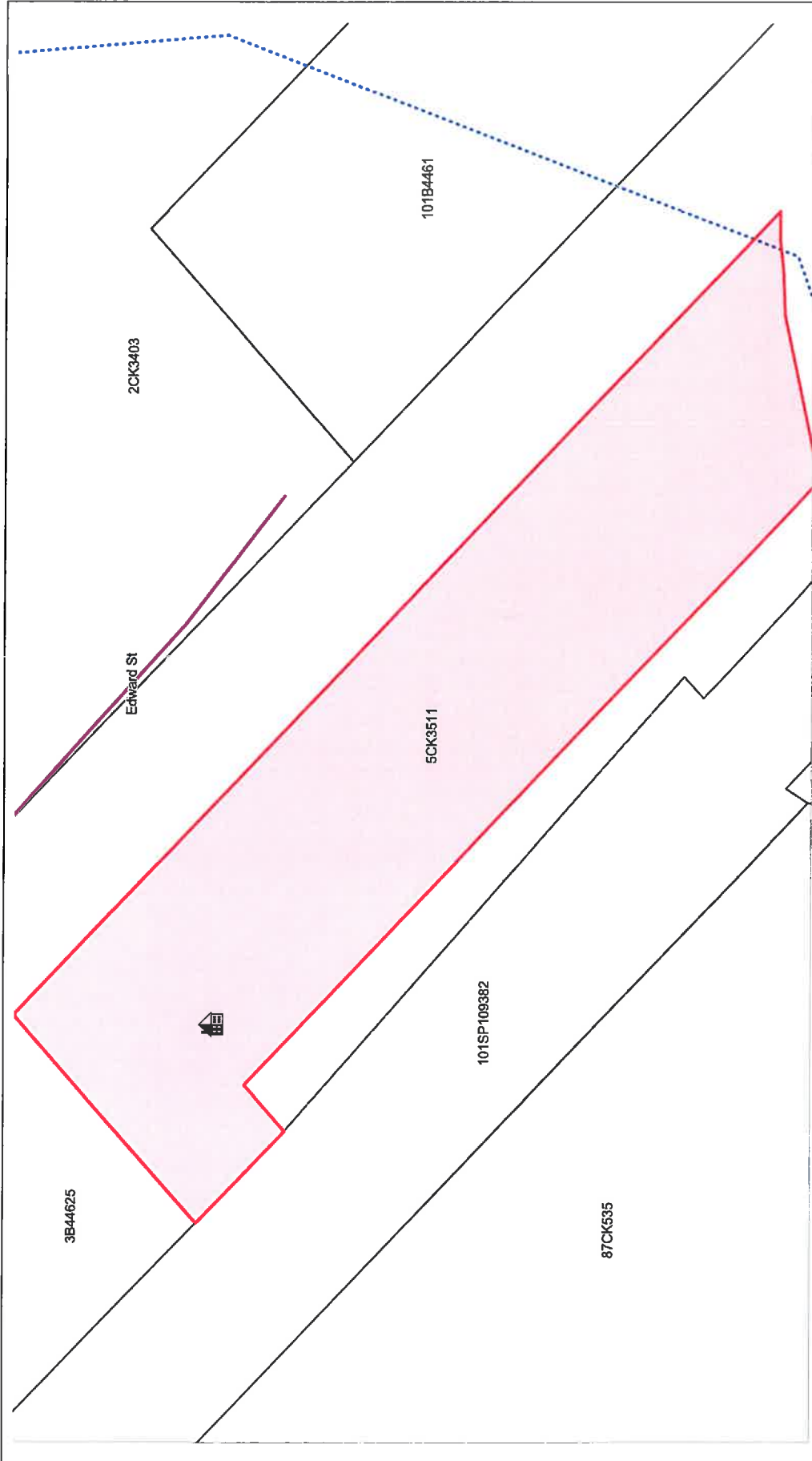


While every care is taken to ensure the accuracy of this data, the North Burnett Regional Council makes no representations or warranties about its accuracy, reliability, completeness or suitability for any particular purpose and disclaims all responsibilities and all liabilities (including without limitation, liability in negligence) for all expenses, losses, damages (including indirect or consequential damage) and costs which you may incur as a result of the data being inaccurate or incomplete in anyway and for any reason.

**Biggenden Museum
General residential zone**

23/10/2018
1:974



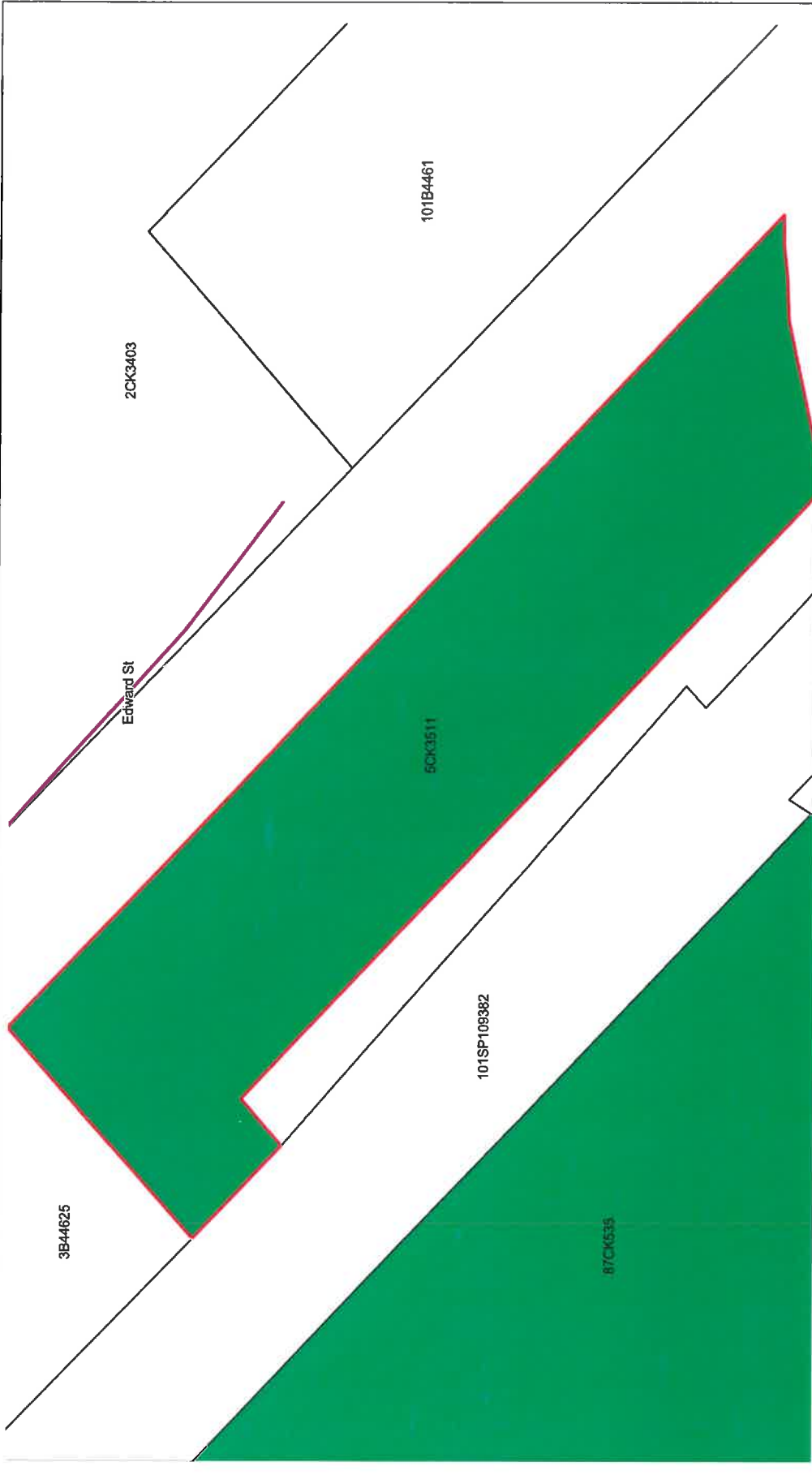


23/10/2018
1:974

**Biggenden Museum
Flood overlay**

While every care is taken to ensure the accuracy of this data, the North Burnett Regional Council makes no representations or warranties about its accuracy, reliability, completeness or suitability for any particular purpose and disclaims all responsibilities and all liabilities (including without limitation, liability in negligence) for all expenses, losses, damages (including indirect or consequential damage) and costs which you may incur as a result of the data being inaccurate or incomplete in anyway and for any reason.





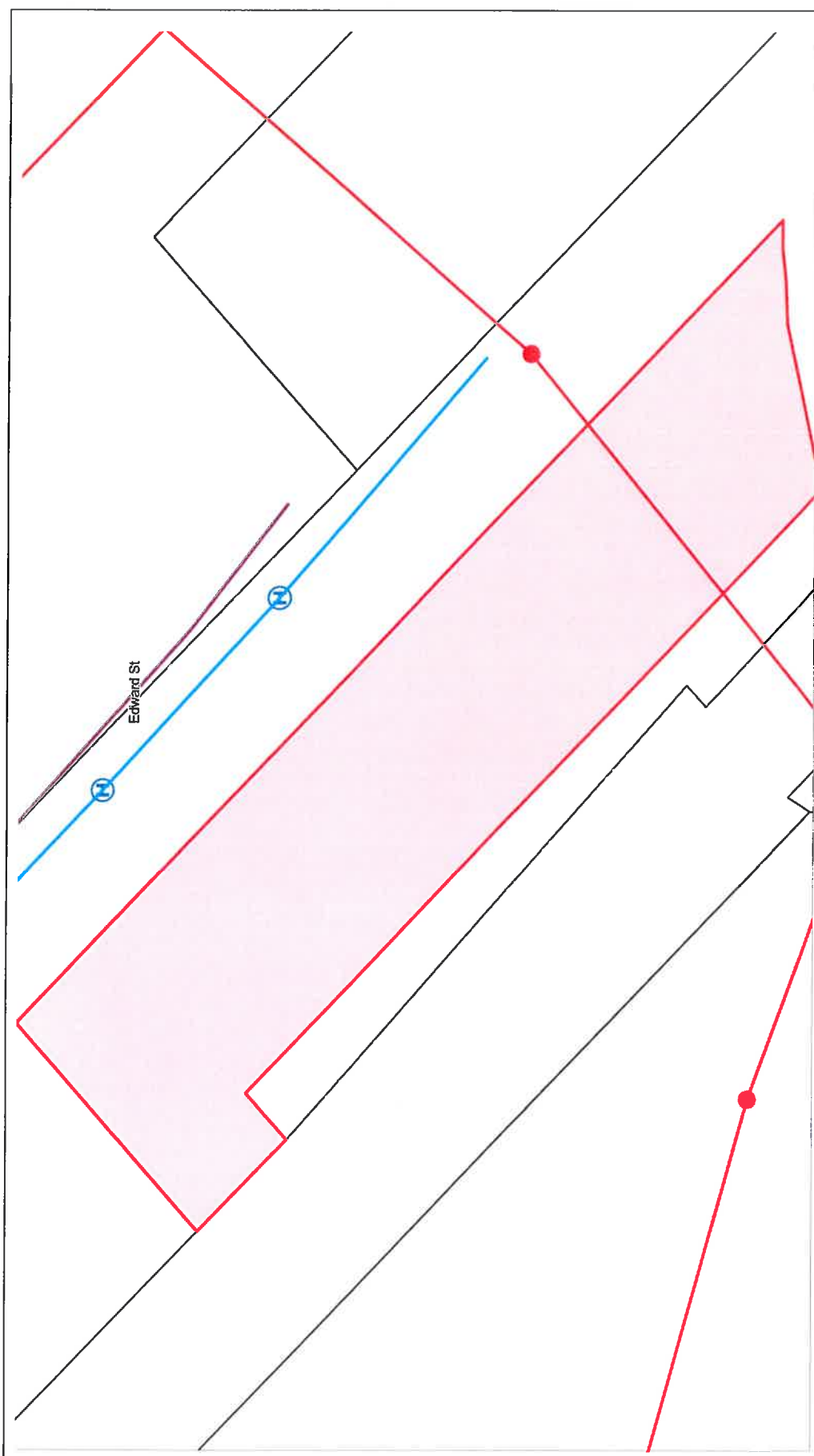
23/10/2018

1:974

**Biggenden Museum
Heritage Register
overlay**

While every care is taken to ensure the accuracy of this data, the North Burnett Regional Council makes no representations or warranties about its accuracy, reliability, completeness or suitability for any particular purpose and disclaims all responsibilities and all liabilities (including without limitation, liability in negligence) for all expenses, losses, damages (including indirect or consequential damage) and costs which you may incur as a result of the data being inaccurate or incomplete in anyway and for any reason.





23/10/2018

1:974

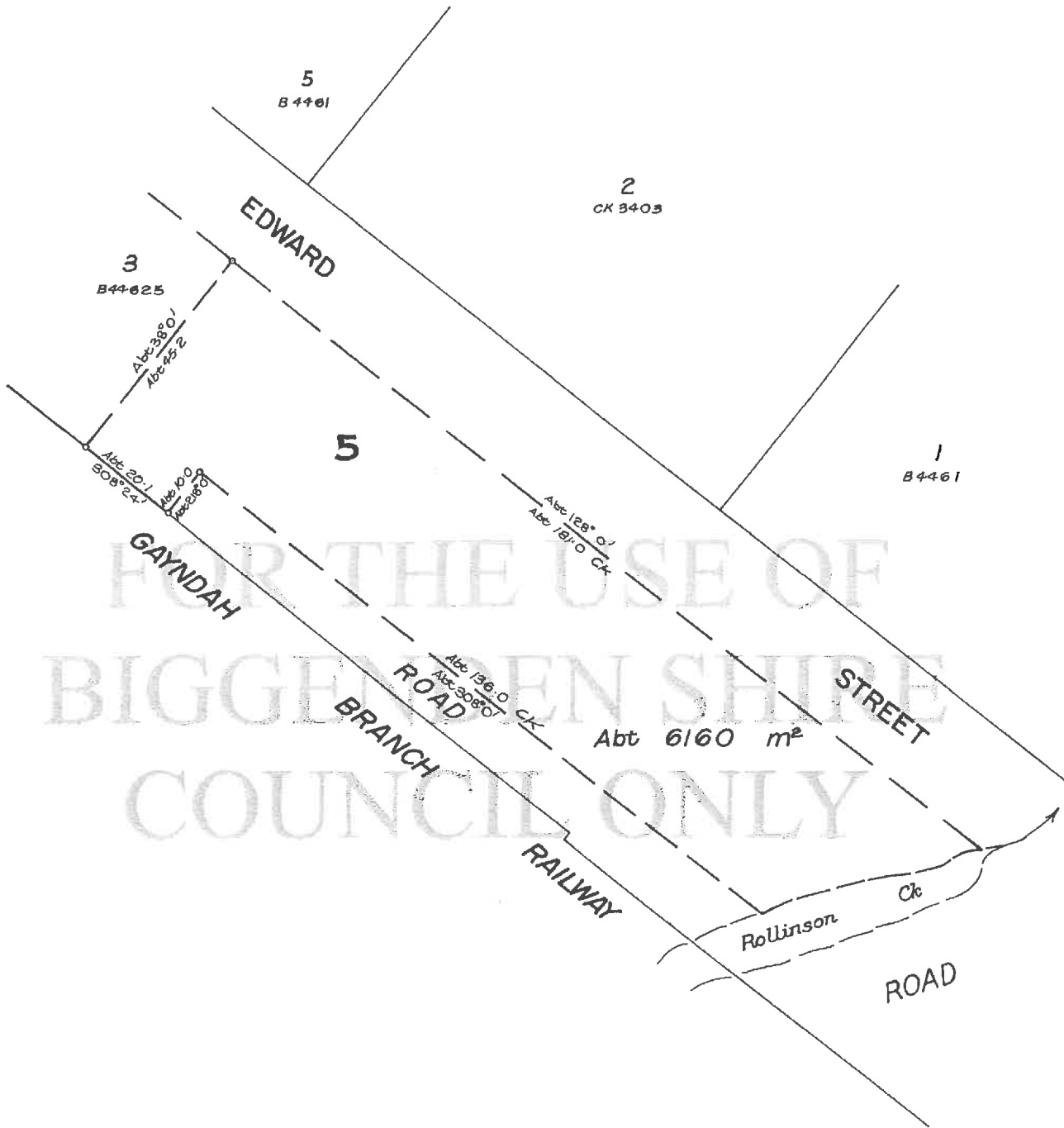
**Biggenden Museum
Water and sewer
overlay**

While every care is taken to ensure the accuracy of this data, the North Burnett Regional Council makes no representations or warranties about its accuracy, reliability, completeness or suitability for any particular purpose and disclaims all responsibilities and all liabilities (including without limitation, liability in negligence) for all expenses, losses, damages (including indirect or consequential damage) and costs which you may incur as a result of the data being inaccurate or incomplete in anyway and for any reason.



Maryb D/o

D.M.S. FORM S.B.10.A



For Additional Plan & Document Notings Refer to CISP

ORIGINAL PURPOSE Allot. 5 of Sec. 20	PREVIOUS PLAN B. 44619	PROCLAIMED SURVEY AREA	MINING FIELD	LAND AGENTS DISTRICT MARYBOROUGH	LOCAL AUTHORITY BIGGENDEN, S.C.
COMPILED FROM D.M.S. PLAN B. 44619 AND R.A. 3356		PLAN OF <u>Lot 5</u>			TOWN/SUBURB/LOCALITY BIGGENDEN
I, the SENIOR EXAMINER * hereby certify that the Department of Mapping and Surveying has made this plan pursuant to Regulation 29 of the Surveyors Regulations 1978 and that the plan is accurate.		MERIDIAN CAM Vide B44613	SCALE 1: 750		PARISH DEGILBO County COOK
* Rodney C. Peck Licensed Surveyor Date 19.1.87		AUTHORITY Res 18882		CHECKED Maryb D/o	REGISTERED 20.1.87
		CHARTED R.G. 12.1.87		MAP REF. Town Map Biggenden	PLAN CK 3511

CROWN COPYRIGHT RESERVED, DEPARTMENT OF MAPPING AND SURVEYING, QUEENSLAND.